

WINDSOR



10610 BARONS COURT



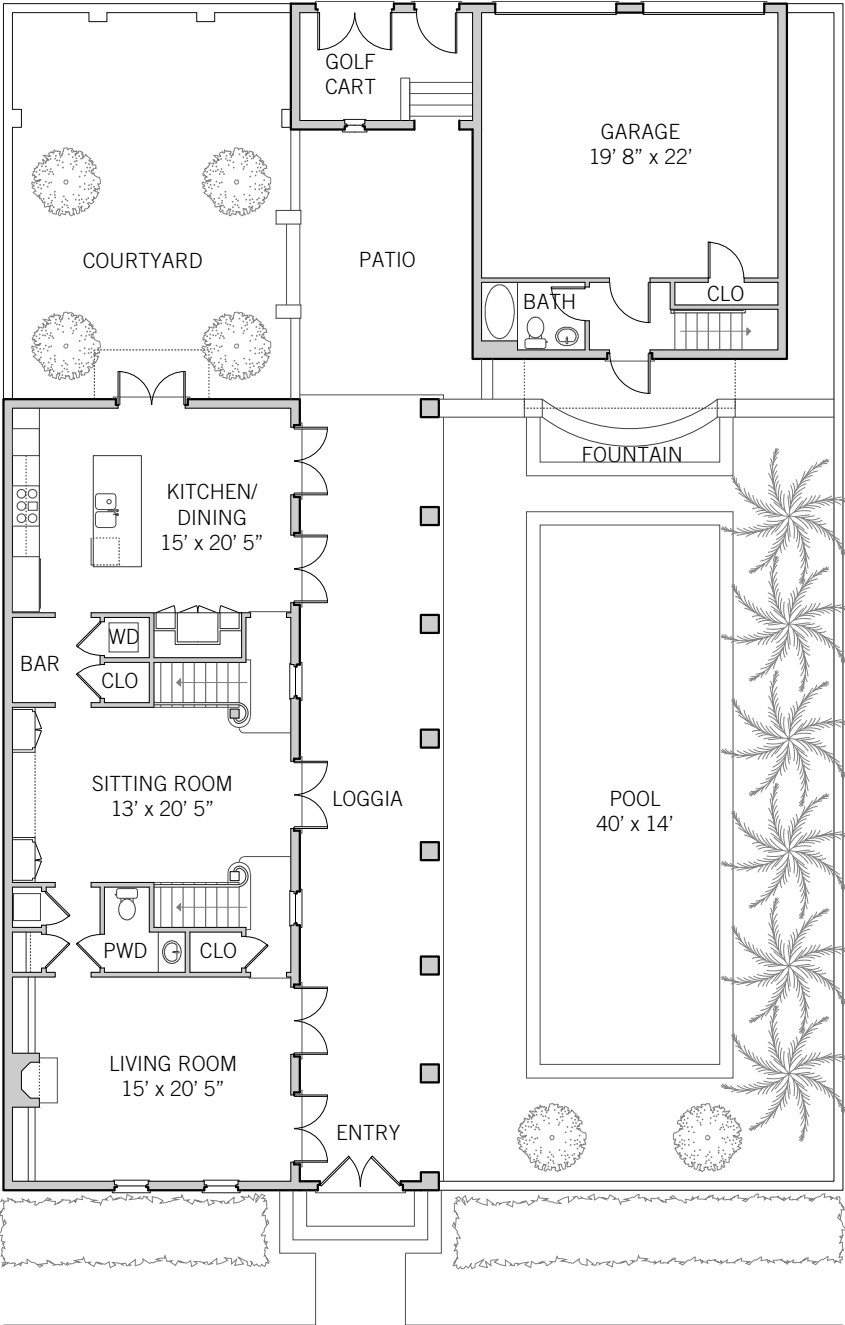
BLOCK 12 LOT 5

BEDROOMS	3
BATHROOMS	4 FULL, 1 HALF
TYPE	SIDEYARD
LOT SIZE	5,598 SQ FT
AIR CONDITIONED SPACE	3,187 SQ FT
NON-AIR CONDITIONED SPACE	3,503 SQ FT
ARCHITECT	ARMANDO MONTERO
BUILDER	WG MILLS, INC
YEAR BUILT	1997

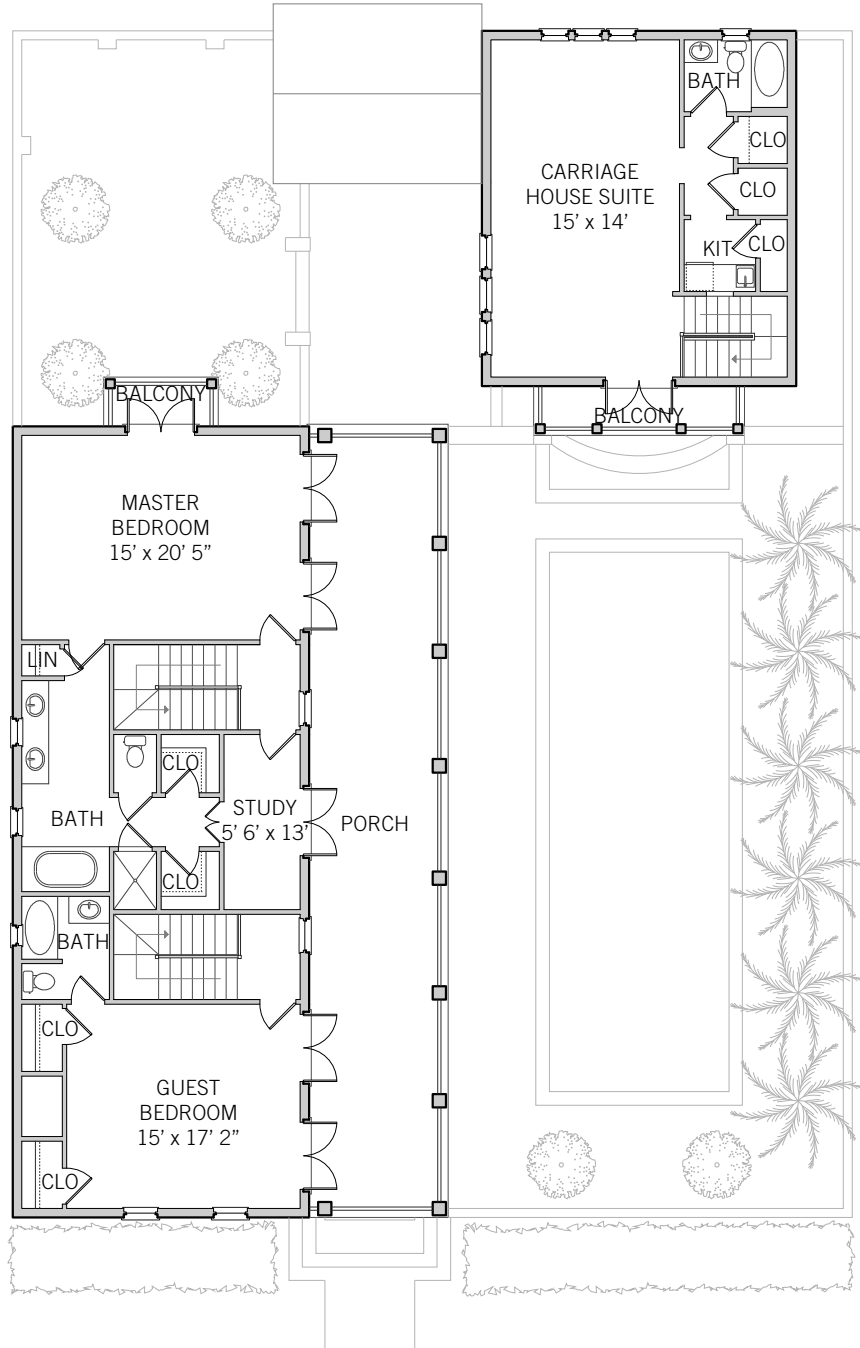
This Windsor Sideyard house is oriented to capture soft ocean breezes, warmth and light from its southern exposure. A charming entry gate leads to a deep loggia that runs the length of the house overlooking a lush garden with pool. The ground floor consists of three primary living spaces, each featuring French doors that open onto the loggia and private courtyard. A family room with fireplace is located at the front of the house, and the more formal sitting room resides at the center. A light-filled eat-in kitchen, with premium appliances and a large waterfall island, opens to the sunny courtyard garden at one end and the loggia and pool to the south. A fountain at one end of the pool adds tranquility to this home's delightful setting. The second floor generously-sized bedrooms enjoy beautiful views from a broad veranda facing south that overlooks the garden and tree-lined street below. Private balconies also overlook the gardens from the master bedroom and carriage house. Classic details and fine millwork are featured throughout this charming home.



BLOCK 12 LOT 5



GROUND FLOOR PLAN



SECOND FLOOR PLAN





BLOCK 12 LOT 5

BEDROOMS	3
BATHROOMS	4 FULL, 1 HALF
AIR CONDITIONED SPACE	3,187 SQ FT
NON-AIR CONDITIONED SPACE	3,503 SQ FT

These drawings, colors, and floor plans are conceptual only and are for the convenience of reference. They should not be relied upon as representation, express or implied, of final detail. The developer expressly reserves the right to make modifications, revisions and changes which it deems desirable in its sole and absolute discretion.



10680 BELVEDERE SQUARE VERO BEACH FLORIDA 32963 TEL 772 388 8400 OR 800 233 7656

WWW.WINDSORFLORIDA.COM