

# WINDSOR



2945 HAMMOCK WAY



## BLOCK 27 LOT 8

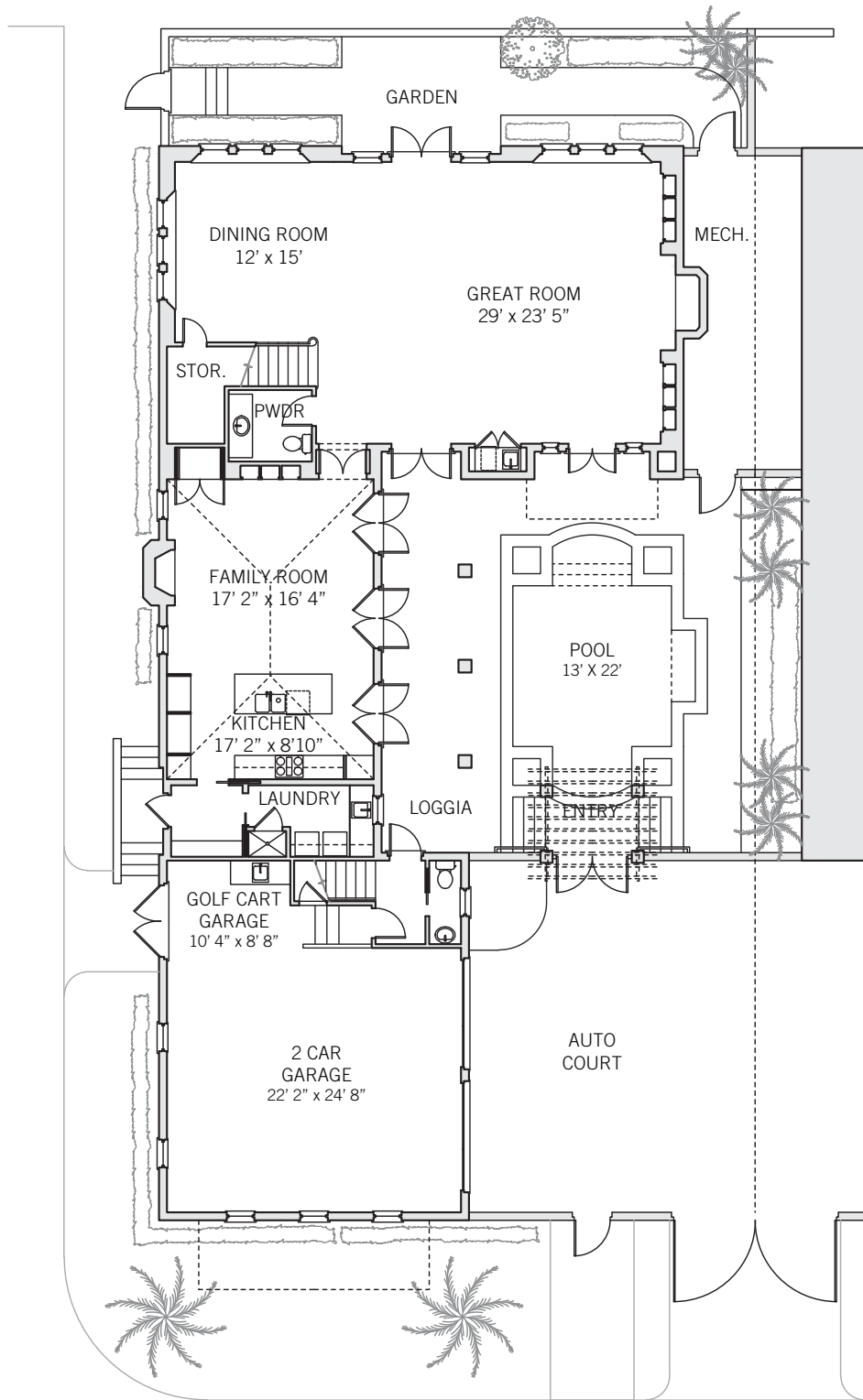
BEDROOMS	3
BATHROOMS	3 FULL, 2 HALF
TYPE	LAKE COTTAGE
LOT SIZE	5,000 SQ FT
AIR CONDITIONED SPACE	3,796 SQ FT
NON-AIR CONDITIONED SPACE	571 SQ FT
ARCHITECT	JOHN BRENNER
BUILDER	HALE CONSTRUCTION, INC.
YEAR BUILT	1999

A trellised entry leads to the sparkling pool courtyard garden at this Windsor Lake Cottage. The deep loggia with high vaulted beamed ceilings provides covered access to the home from both the main entry and garage. A generous great room with stunning views greets you upon arrival and features a wood-burning fireplace flanked by superior built-in cabinetry, ipe wood flooring with an inlaid border detail, and walls of windows awash the room with natural light from its southern exposure. French doors open to the charming Chicago brick paved terrace offering sweeping views of the lake and golf course. Recessed pocketing doors lead to the cheerful kitchen and family room with a tongue-and-groove hip beamed ceiling, large island with breakfast bar, another wood-burning fireplace and built-in entertainment center. French doors open to the loggia and pool courtyard. An adjoining laundry/mud room offers convenient access off the kitchen to a side lane. The turned staircase leading to the upstairs master suite boasts storage closets at each level and arrives at a spacious loft-style sitting room and private porch. His-and-her closets reside at either side of the entry to the bright master bathroom with jetted tub. The light-filled master bedroom enjoys warm cross-breezes and phenomenal lake and golf views to the south and the polo field and village beyond to the north. Two guest suites with ample bathrooms occupy the carriage house and share a balcony offering views across the green expanse of the polo field.

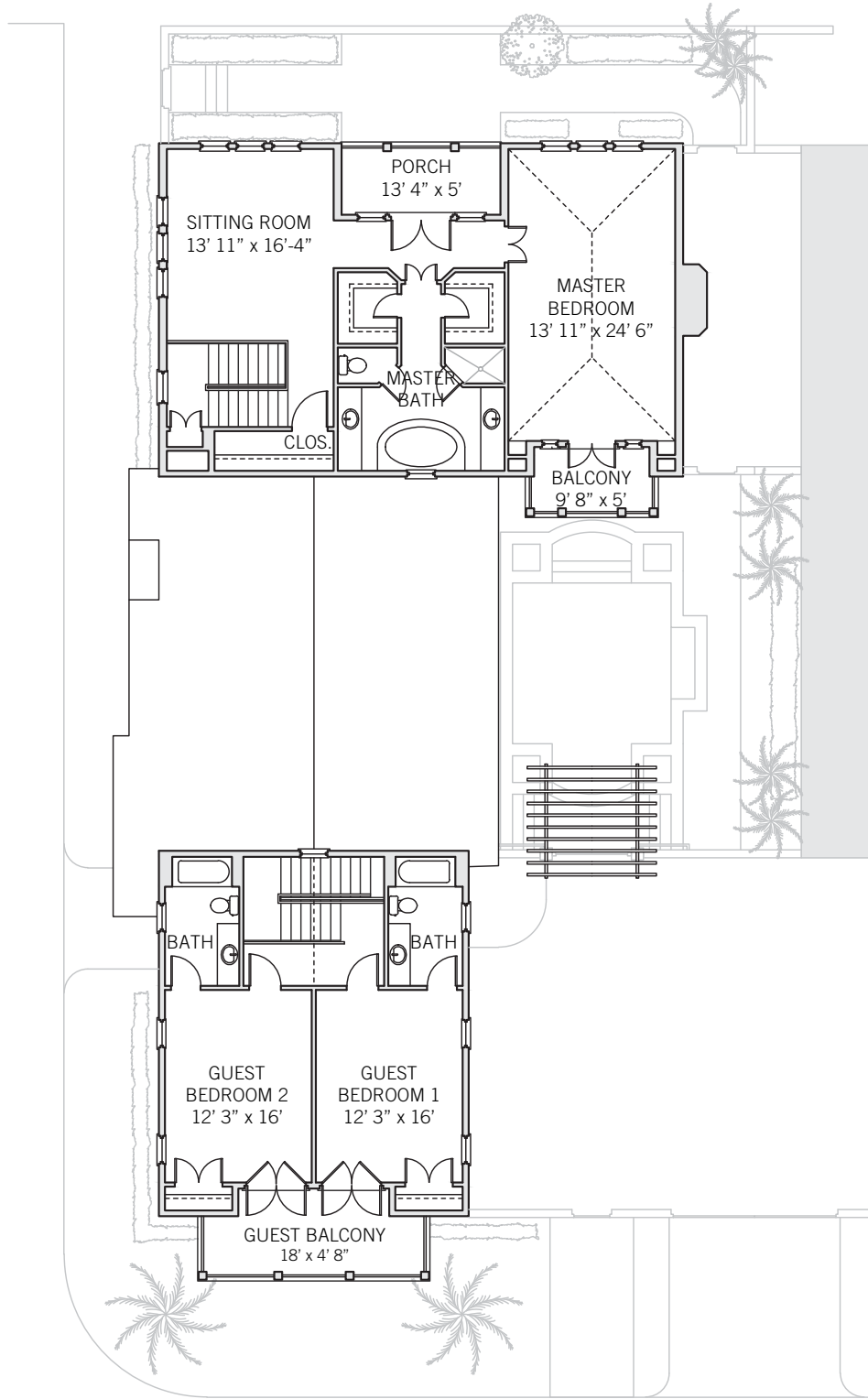




# BLOCK 27 LOT 8



GROUND FLOOR PLAN

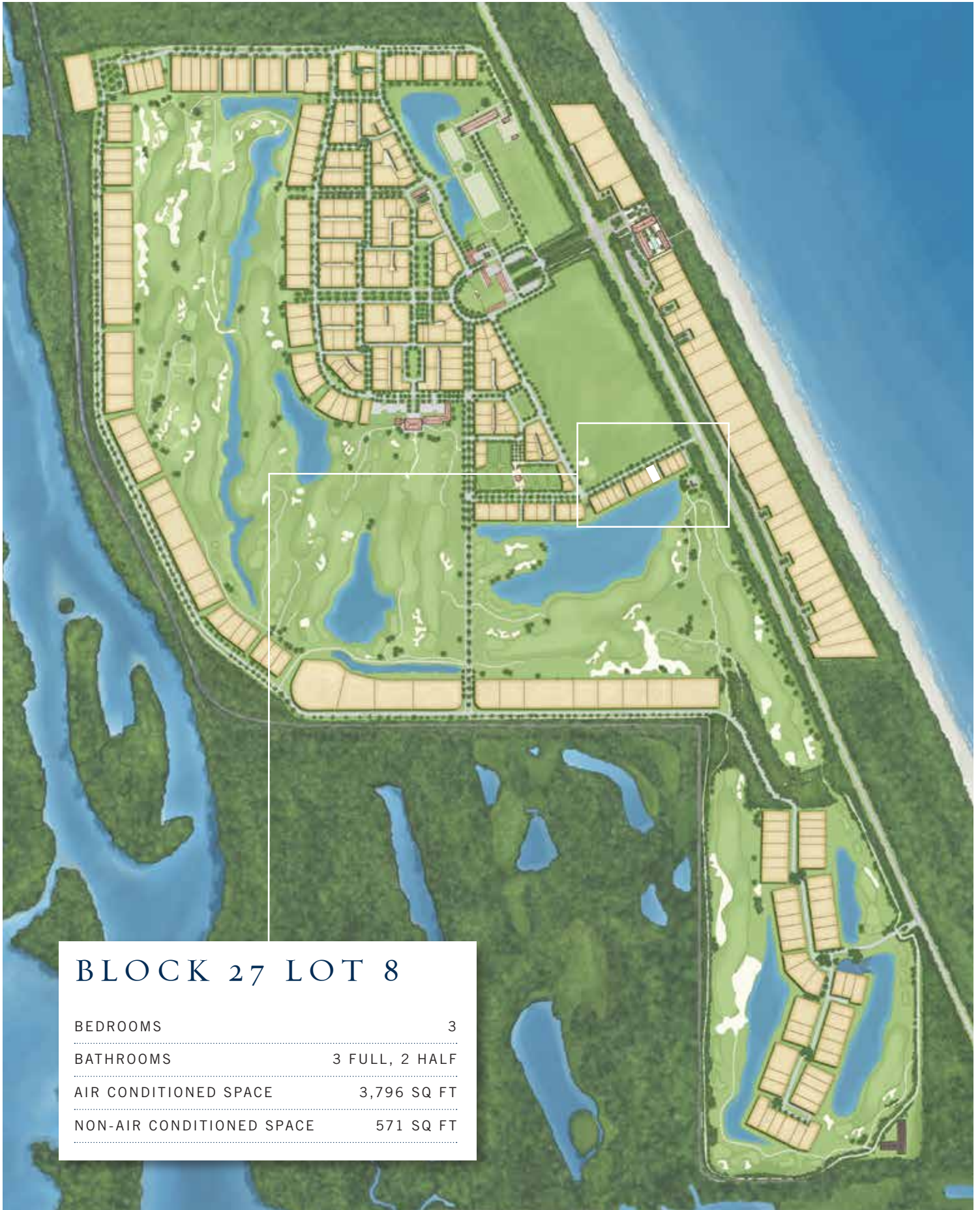


SECOND FLOOR PLAN









## BLOCK 27 LOT 8

BEDROOMS	3
BATHROOMS	3 FULL, 2 HALF
AIR CONDITIONED SPACE	3,796 SQ FT
NON-AIR CONDITIONED SPACE	571 SQ FT

These drawings, colors, and floor plans are conceptual only and are for the convenience of reference. They should not be relied upon as representation, express or implied, of final detail. The developer expressly reserves the right to make modifications, revisions and changes which it deems desirable in its sole and absolute discretion.



10680 BELVEDERE SQUARE VERO BEACH FLORIDA 32963 TEL 772 388 8400 OR 800 233 7656

[WWW.WINDSORFLORIDA.COM](http://WWW.WINDSORFLORIDA.COM)