

# WINDSOR



10895 SAVANNAH DRIVE, No. 204

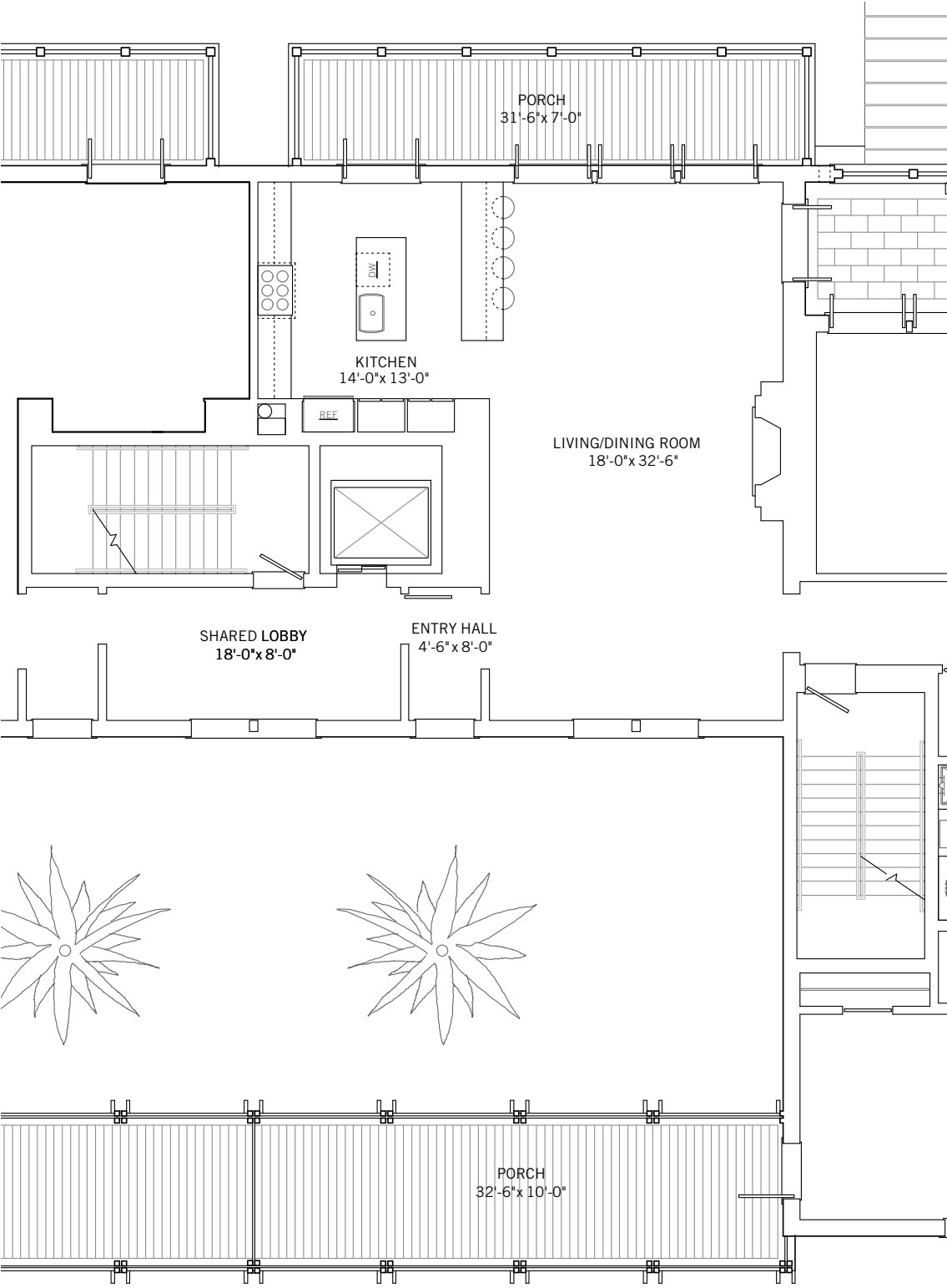


## No. 204

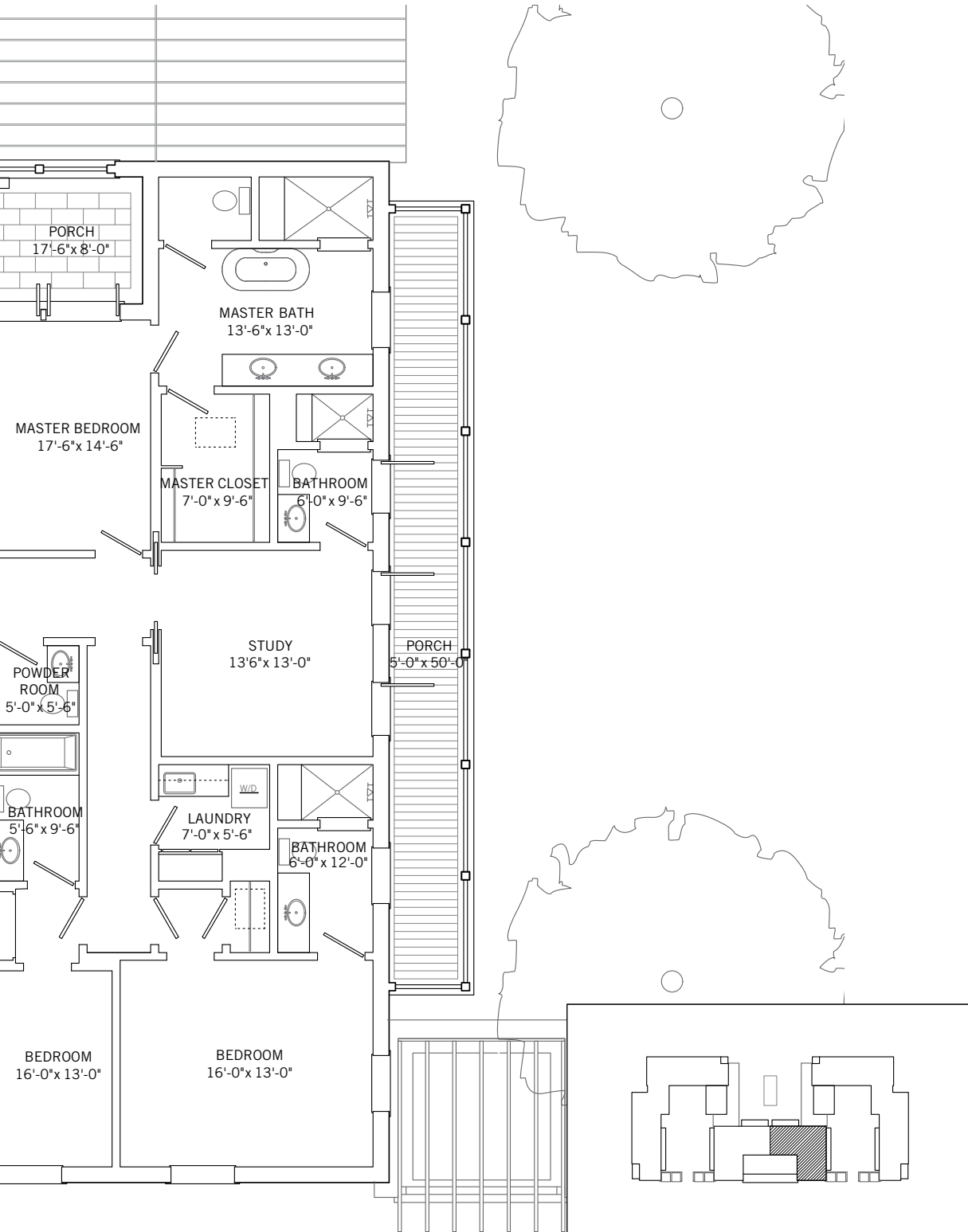
BEDROOMS	3
BATHROOMS	4 FULL, 1 HALF
LEVEL	SECOND
TYPE	WINDSOR PARK RESIDENCE
AIR CONDITIONED SPACE	2,738 SQ FT
NON-AIR CONDITIONED SPACE	985 SQ FT
ARCHITECT	MERRILL, PASTOR & COLGAN
BUILDER	HURYN CONSTRUCTION
YEAR BUILT	2018

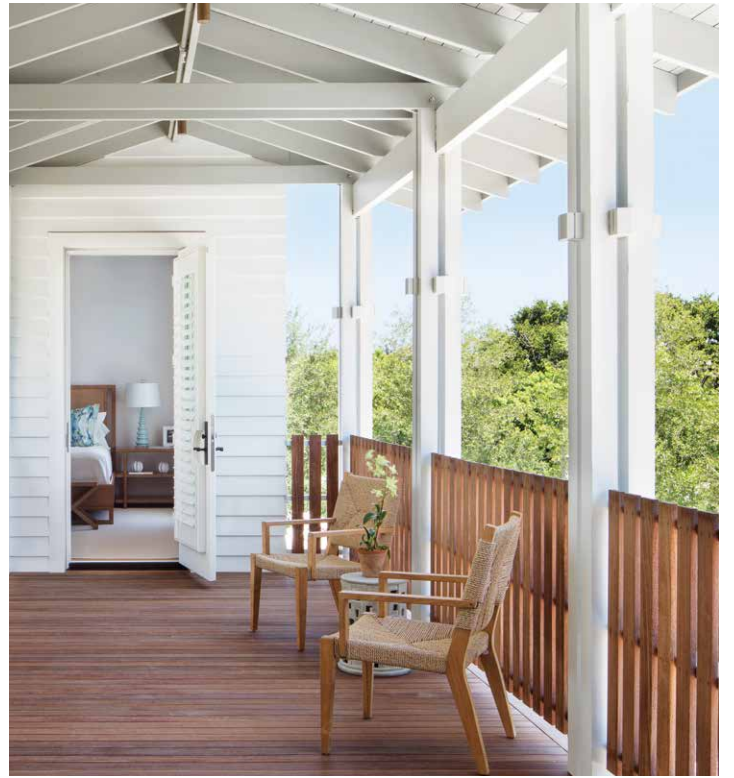
Poised at tree-top level, this spacious, light-filled home overlooks Windsor Park Residences' beautifully landscaped central courtyard with a reflecting pool, the lush expanse of preserved green space along the Indian River, and serene gardens. Design details that create airy, inviting interiors include numerous tall windows and French doors across four exposures, 7-inch wide plank engineered oak flooring, recessed lighting, and 8-foot-tall interior doors. Covered balconies provide direct access to fresh air from all but one room in this welcoming home, which features a fireplace in the great room. The open-plan kitchen has been designed with a breakfast bar, and is equipped with premium Sub-Zero, Wolf, and Bosch appliances. Four sets of French doors across the western exposure of the kitchen and great room open to a broad covered porch that is ideal for al fresco dining and relaxing. A separate set of French doors leads from the great room to a loggia-style porch off the master bedroom suite. The master bedroom, study, and two additional bedrooms all have en-suite full bathrooms with Calacatta Gold marble countertops and natural stone flooring. The master bath has both a frameless glass shower and a freestanding bathtub by Victoria + Albert. This home has been decorated by Spectrum Interior Design and it may be purchased with the furnishings, which perfectly balance sophistication and comfort.





# WINDSOR PARK RESIDENCES







## No. 204

BEDROOMS	3
BATHROOMS	4 FULL, 1 HALF
AIR CONDITIONED SPACE	2,738 SQ FT
NON-AIR CONDITIONED SPACE	985 SQ FT

These drawings, colors, and floor plans are conceptual only and are for the convenience of reference. They should not be relied upon as representation, express or implied, of final detail. The developer expressly reserves the right to make modifications, revisions and changes which it deems desirable in its sole and absolute discretion.



10680 BELVEDERE SQUARE VERO BEACH FLORIDA 32963 TEL 772 388 8400 OR 800 233 7656

[WWW.WINDSORFLORIDA.COM](http://WWW.WINDSORFLORIDA.COM)