

WINDSOR



10560 FIFE AVENUE

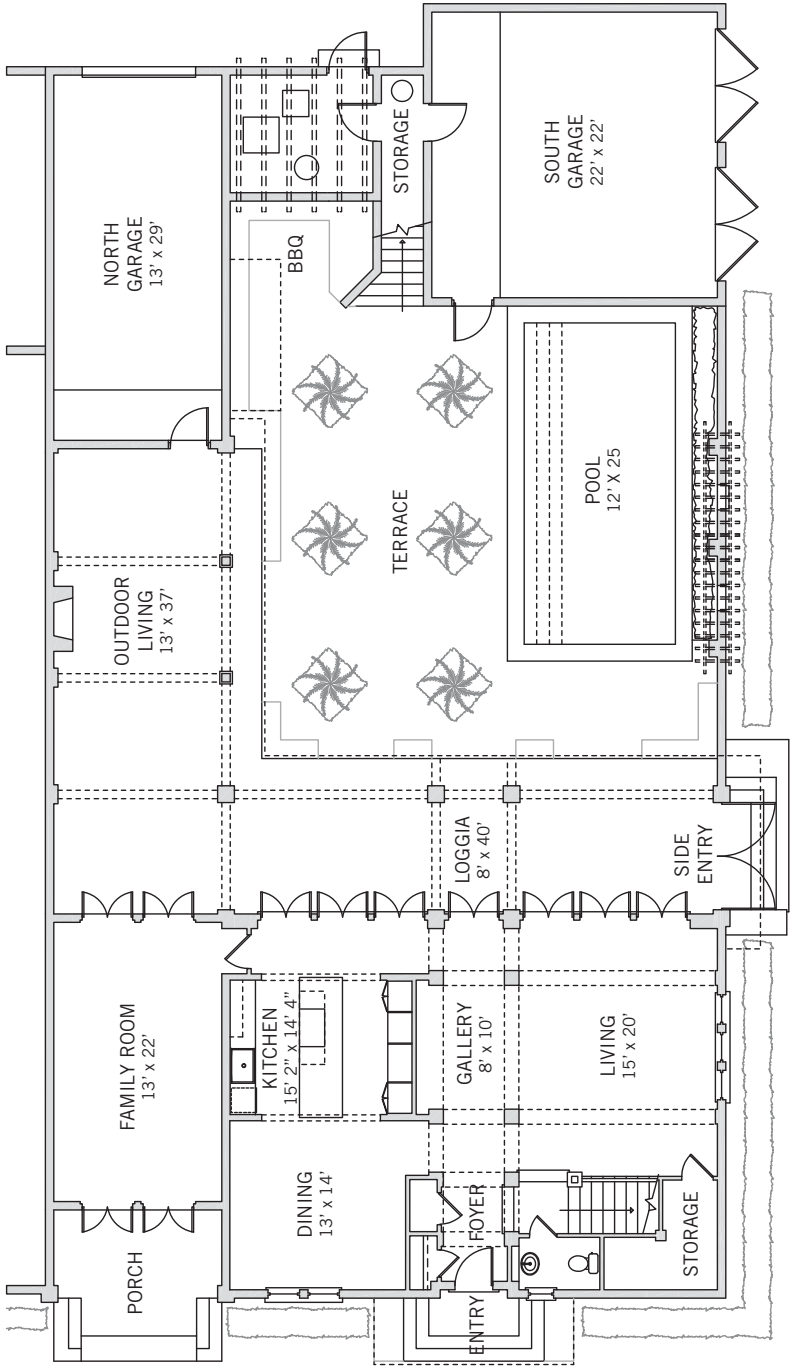


BLOCK 18 LOT 7

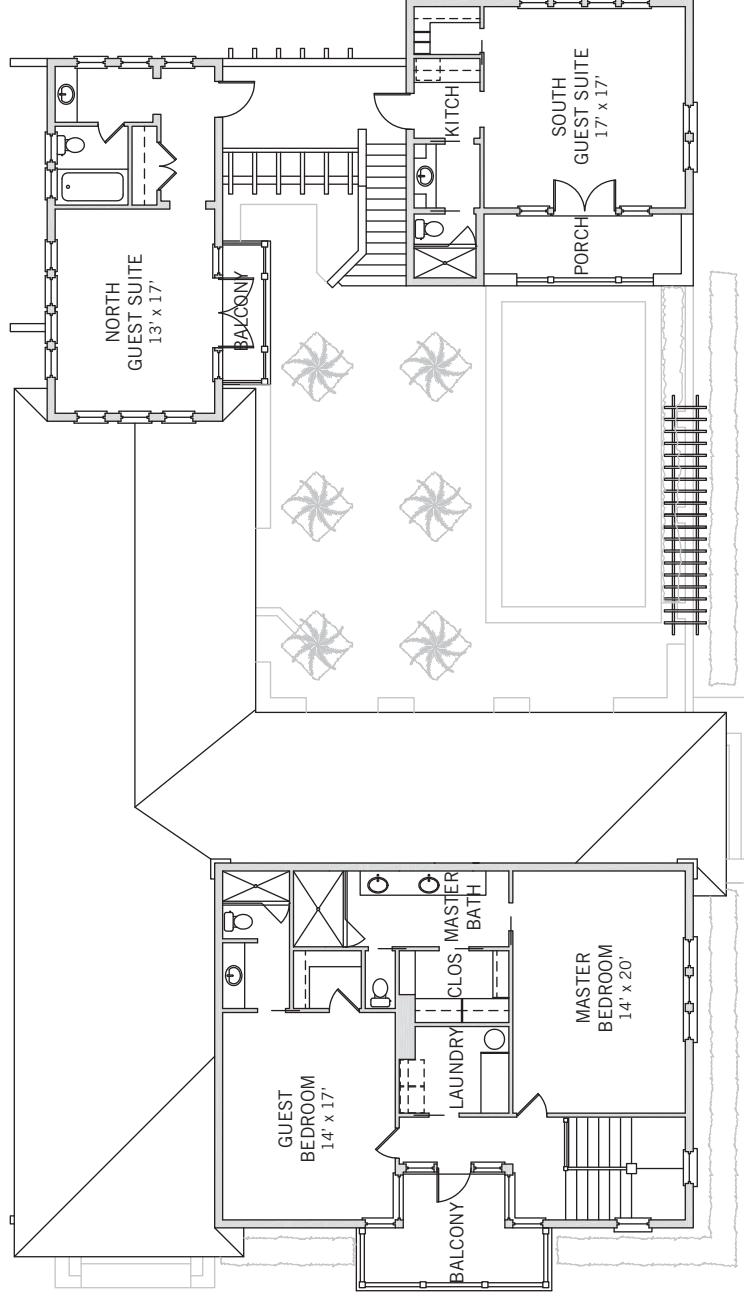
BEDROOMS	4
BATHROOMS	4 FULL, 1 HALF
TYPE	TENNIS COTTAGE
LOT SIZE	5,662 SQ FT
AIR CONDITIONED SPACE	3,234 SQ FT
NON-AIR CONDITIONED SPACE	1,503 SQ FT
ARCHITECT	GEORGE BOLLIS
BUILDER	RCL DEVELOPMENT, INC.
YEAR BUILT	1996
YEAR RENOVATED	2018

Set on a prominent corner across from the links-style golf course and designed to offer privacy near some of the community's most cherished sporting and social amenities, this home perfectly embodies the iconic Windsor lifestyle. A 2018 renovation has brought the highest quality contemporary design throughout the interior and exterior spaces. The main entry is through a gracious double gate that opens to the central pool courtyard, which connects the property's three buildings and serves as an outdoor great room. This delightful oasis – equally ideal for relaxing or entertaining – has new Coralina stone paving and tropical landscaping. The deep L-shaped loggia framing the courtyard offers dining and living areas with an outdoor fireplace along one side and a dramatic sequence of French doors along the other for seamless access to the living room, gallery, kitchen, and family room. Along the east end of the courtyard, two one-bedroom, one-bathroom guest cottages, both with balconies and one with a kitchenette, are connected via a breezeway. Contemporary interiors in the main home are finished with bleached maple flooring throughout. The beautifully renovated kitchen, now featuring Italian Poliform cabinetry and premium appliances, is open to the dining room, where a picture window frames the golf course view. The adjacent family room opens to a porch facing the golf course and the loggia. A staircase in the entry foyer leads to the second story, where clerestory windows bring abundant natural light to the master and second bedrooms and their en-suite bathrooms. The master suite's Boffi-designed bathroom is one of three new bathrooms. A covered balcony offering spectacular sunset views completes this floor. With crisp architectural details, a cool exterior palette, and manicured gardens, this home is at once timeless and chic.

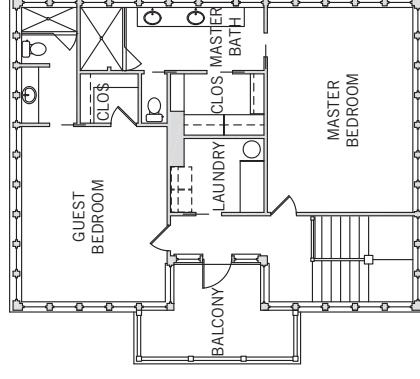




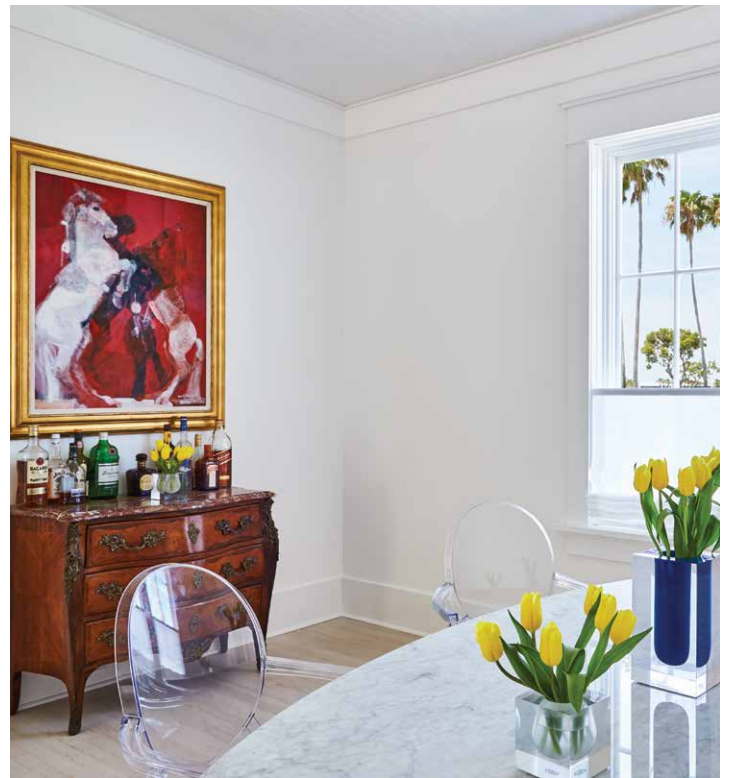
GROUND FLOOR PLAN

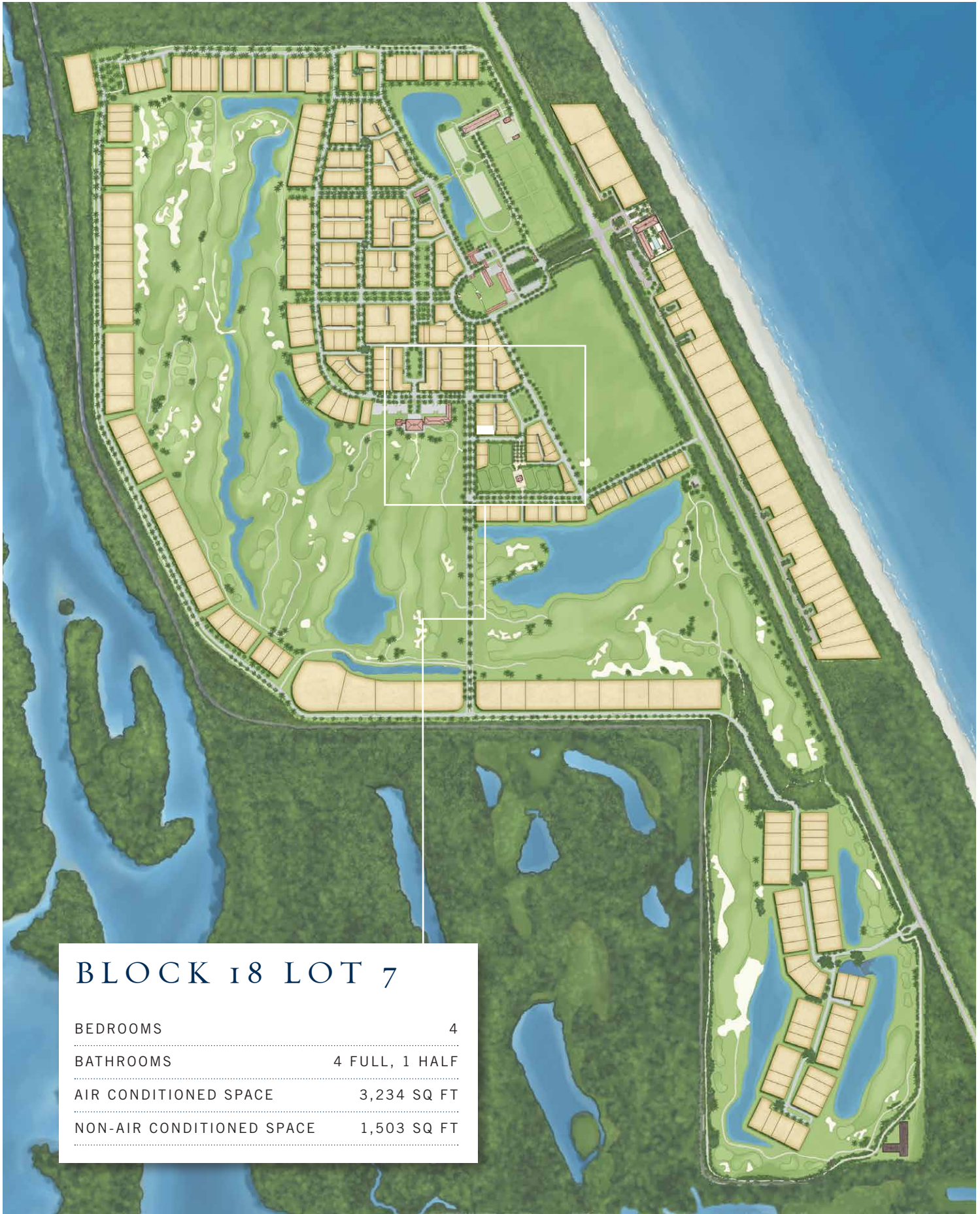


SECOND FLOOR PLAN



PARTIAL
SECOND
FLOOR PLAN
SHOWING
CLERESTORY
WINDOWS





BLOCK 18 LOT 7

BEDROOMS	4
BATHROOMS	4 FULL, 1 HALF
AIR CONDITIONED SPACE	3,234 SQ FT
NON-AIR CONDITIONED SPACE	1,503 SQ FT

These drawings, colors, and floor plans are conceptual only and are for the convenience of reference. They should not be relied upon as representation, express or implied, of final detail. The developer expressly reserves the right to make modifications, revisions and changes which it deems desirable in its sole and absolute discretion.



