

WINDSOR



2165 THOMAS COURT





2165 THOMAS COURT

Recipient of the 2020 Addison Mizner Award by The Institute of Classical Architecture and Art, this elegant five-bedroom home in Windsor's peaceful South Village was conceived as a symmetrical garden villa in the manner of grand country estates. Its sculpted stucco façade and interior architecture are sophisticated contemporary interpretations of traditional Anglo-Caribbean design. Airy, light-filled living and dining spaces with soaring double-height ceilings enjoy remarkable southwest views over the lakeside pool terrace, golf course and tropical foliage of Jungle Trail.

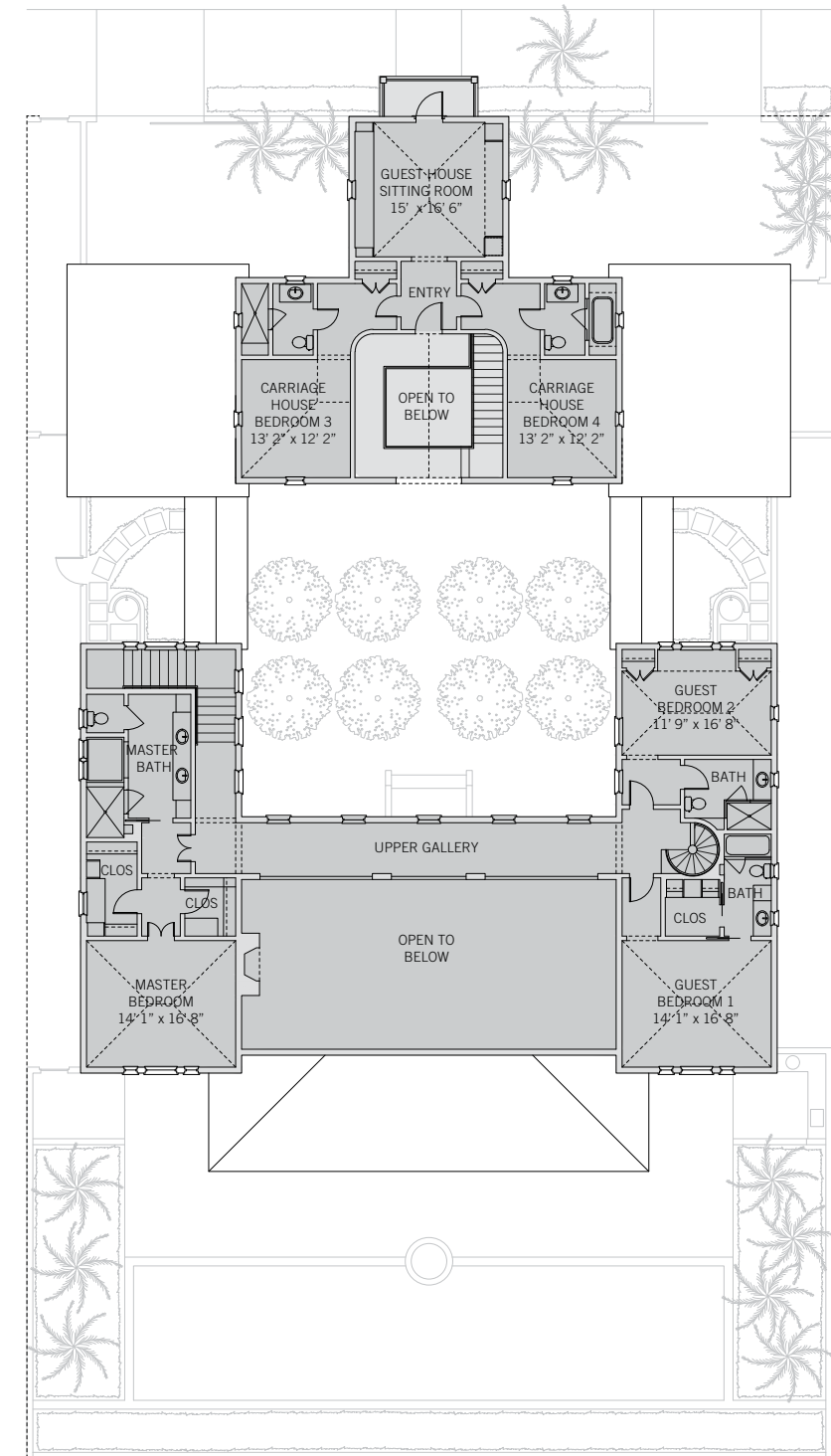
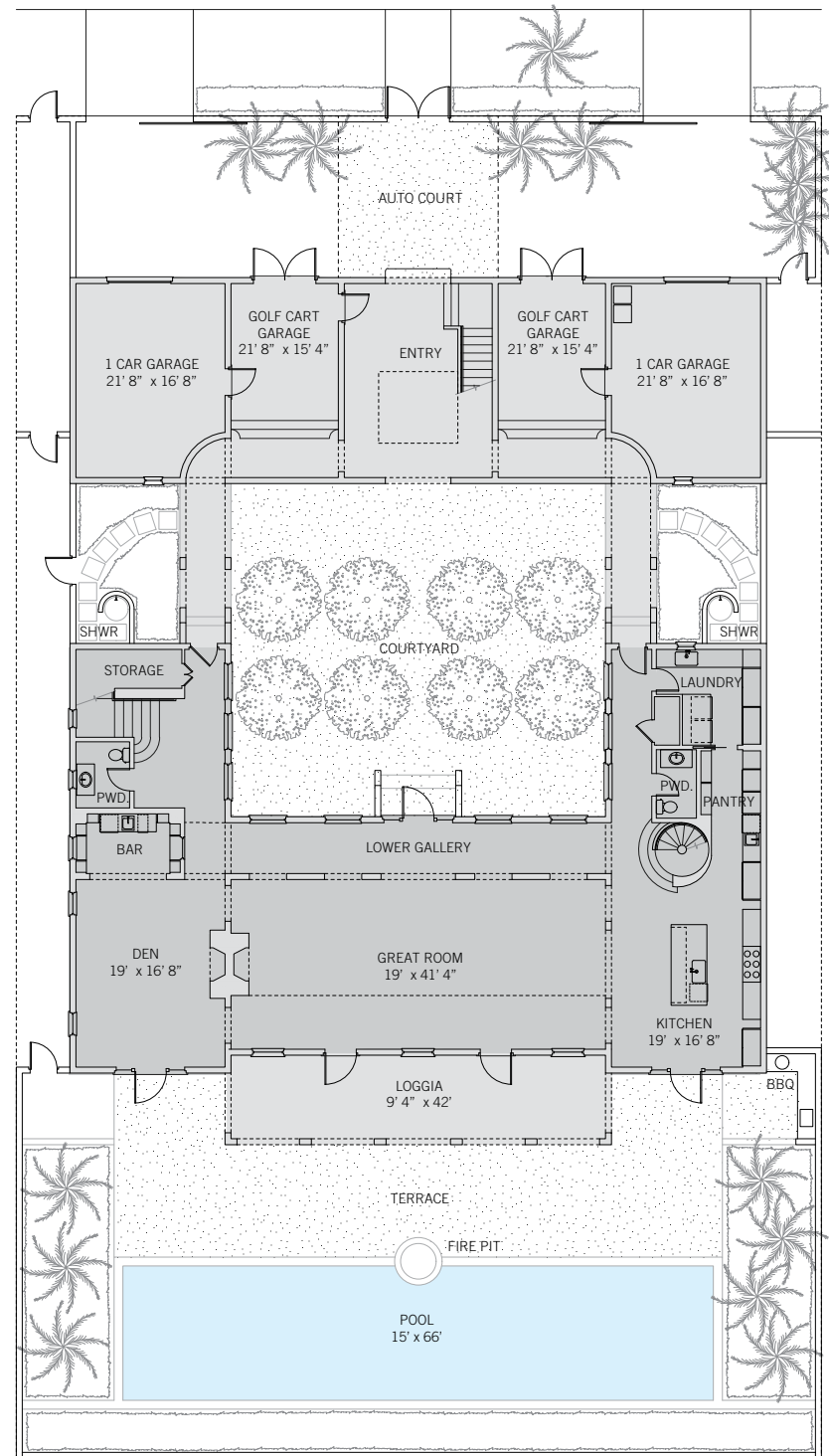
BEDROOMS	5
BATHROOMS	5 FULL, 2 HALF
A/C SPACE	5,925 SQ FT
NON-A/C SPACE	2,824 SQ FT
ADJUSTED SPACE*	7,337 SQ FT
LOT TYPE	SOUTH VILLAGE
LOT SIZE	13,500 SQ FT
LOCATION	BLOCK 56 / LOT 4
ARCHITECT	MOOR, BAKER & ASSOCIATES
BUILDER	BARTH CONSTRUCTION OF VB, LLC
YEAR BUILT	2019

**Adjusted Space equals A/C space plus 50% of non-A/C space*

SOUTH VILLAGE

Windsor's South Village is a tranquil enclave of golf estates and custom residences overlooking lakes, fairways and lush oak hammocks. Homes are designed to take advantage of views while offering great privacy with tall garden walls and thoughtfully placed windows. Typical home sites feature gardens and courtyards, porches overlooking the golf course and separate carriage houses with guest suites above. In addition to the Windsor main entrance, the South Village is accessible directly from A1A.





These drawings, colors and floor plans are conceptual only and are for the convenience of reference. They should not be relied upon as representation, express or implied, of final detail. The developer expressly reserves the right to make modifications, revisions and changes which it deems desirable in its sole and absolute discretion.





LIVING & ENTERTAINING

This home is organized around an open central axis that extends from the entry gate, through the tree-lined central courtyard to the great room and finally the poolside loggia, framing a beautiful view over the lake and golf course. A series of living and dining spaces open to the courtyard and to the loggia through tall steel doors, offering seamless indoor-outdoor living. Distinctive contemporary design elements include polished concrete floors, walls clad in dropped ship lap planking and a sculptural circular staircase to the guest suites.





PRIVATE SUITES

Five bedroom suites are situated to offer privacy as well as excellent views. In the master suite, which is accessed via a dedicated staircase, the bedroom with vaulted ceilings boasts southwest views over the lake and golf course. This suite also offers two walk-in closets / dressing rooms and a bathroom with a unique square plunge bathtub. A glass walkway above the great room connects the master suite to two guest suites, each with its own en-suite bathroom. The second floor of the carriage house offers two bedrooms overlooking the central courtyard and a sitting room with a covered balcony overlooking the South Village.





DESIGN DETAILS & FINISHES

PROPERTY & ARCHITECTURE

- Lakefront South Village property
- Five bedrooms, five bathrooms, two powder rooms
- Two one-car garages and two one-golf-cart garages
- Poured concrete façade with sculpted stucco Anglo-Caribbean style gables

OUTDOOR LIVING

- Central courtyard with symmetrically aligned buttonwood trees and gravel ground cover
- Poolside loggia with cypress-clad ceiling and sculpted stucco arches offers spacious dining and lounging areas
- 15 by 66-foot swimming pool with seat-height raised wall and integrated fire pit
- Pool terrace and loggia paved with sandblasted concrete decking
- Poolside outdoor grill
- Two outdoor showers

INDOOR LIVING

- Great room with dropped shiplap plank walls and columns and a fireplace opens to poolside loggia via five tall Hope steel-framed doors
- Library with fireplace and wet bar

- Kitchen with a honed marble island with breakfast bar, Glassos slab backsplash and custom painted wood cabinetry
- Kitchen appliances by Sub-Zero and Gaggenau
- Walk-through butler's pantry
- Polished concrete and white oak flooring

MASTER SUITE

- Accessed via dedicated staircase
- Bedroom with vaulted ceilings overlooks lake and golf course
- Two walk-in closets
- Bathroom with double vanity, square plunge bathtub, separate shower and polished chrome La Cava fixtures

GUEST SUITES

- Accessed via circular staircase
- Bedroom with en-suite bathroom overlooking the central courtyard
- Bedroom with vaulted ceilings, walk-in closet and en-suite bathroom overlooks the lake and golf course

CARRIAGE HOUSE

- Two bedrooms, each with en-suite bathroom
- Sitting room with covered balcony overlooking the South Village

A VILLAGE BY THE SEA

Located in Vero Beach along Florida's Treasure Coast, Windsor is a private residential community and sporting club with a uniquely enchanting lifestyle. Across 425 lush acres, nestled between the Atlantic Ocean and the Indian River, Members and guests enjoy a host of exclusive amenities, including beach and golf clubs, a links-style golf course, tennis and equestrian centers and fine and casual dining restaurants.



AMENITIES

1. VILLAGE CENTRE
2. FITNESS & WELLNESS CENTRE
3. TOWN HALL
4. EQUESTRIAN CENTRE
5. BEACH CLUB
6. POLO FIELD
7. CROQUET GREENSWARD
8. TENNIS CENTRE
9. CLUBHOUSE
10. THE GALLERY



10680 BELVEDERE SQUARE VERO BEACH FLORIDA 32963

TEL 772 388 8400 OR 800 233 7656

WINDSORFLORIDA.COM