

WINDSOR



10165 ST. AUGUSTINE AVENUE



10165 ST. AUGUSTINE AVENUE

This American Institute of Architects-award-winning home features sunset and golf course views and pairs sustainable design with relaxed elegance to create a distinctive tropical ambience. Outdoor living is celebrated at every turn, beginning with the open-air entry atrium and loggia overlooking the pool, continuing in a spacious garden pavilion overlooking the fairways, and culminating along covered porches that wrap the second floor.

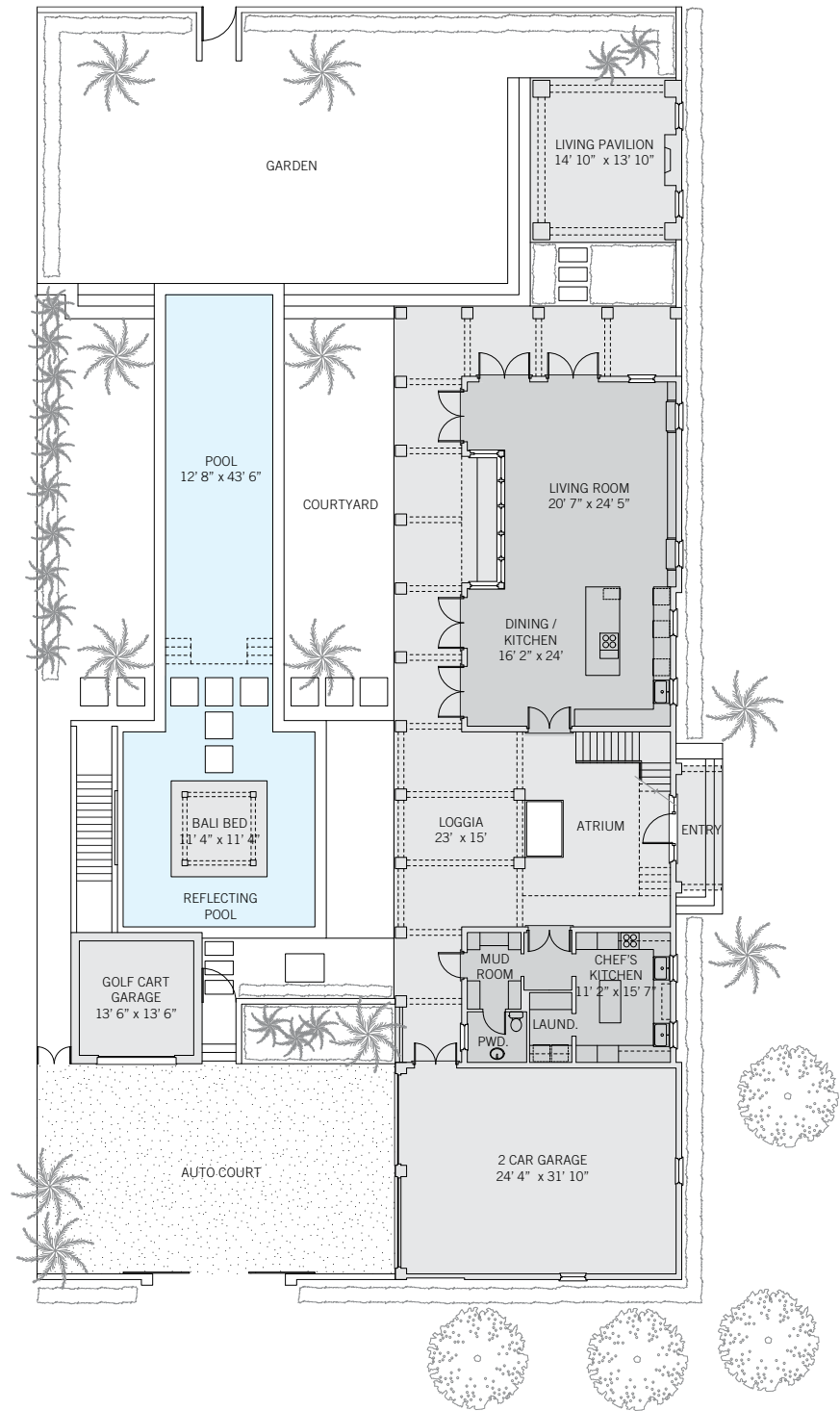
BEDROOMS	5
BATHROOMS	5 FULL, 1 HALF
A/C SPACE	3,829 SQ FT
NON-A/C SPACE	5,251 SQ FT
ADJUSTED SPACE*	6,454 SQ FT
LOT TYPE	SOUTH VILLAGE
LOT SIZE	11,700 SQ FT
LOCATION	BLOCK 60 / LOT 5
ARCHITECT	CLEMENS BRUNS SCHAUB
BUILDER	HURYN CONSTRUCTION
YEAR BUILT	2008

**Adjusted Space equals A/C space plus 50% of non-A/C space*

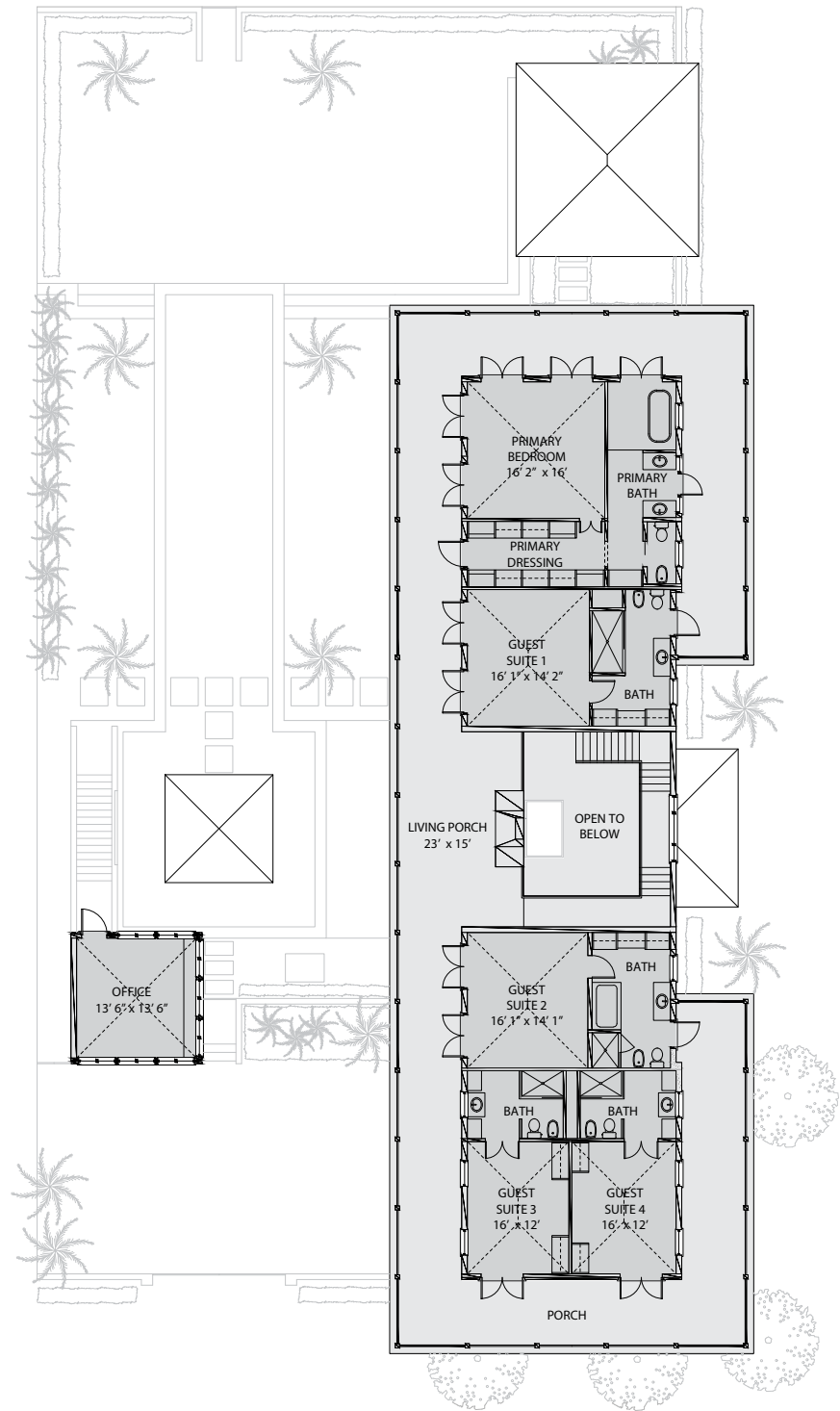
SOUTH VILLAGE

Windsor's South Village is a tranquil enclave of golf estates and custom residences overlooking lakes, fairways and lush oak hammocks. This home's eco-conscious floor plan connects with the light, air, sounds, scents and scenery of coastal Florida by placing corridors, transitional areas and most social rooms outside. Anglo-Caribbean-style roofs with deep eaves and wooden shutters enable these spaces to offer perfect comfort while minimizing energy usage.





These drawings, colors and floor plans are conceptual only and are for the convenience of reference. They should not be relied upon as representation, express or implied, of final detail. The developer expressly reserves the right to make modifications, revisions and changes which it deems desirable in its sole and absolute discretion.





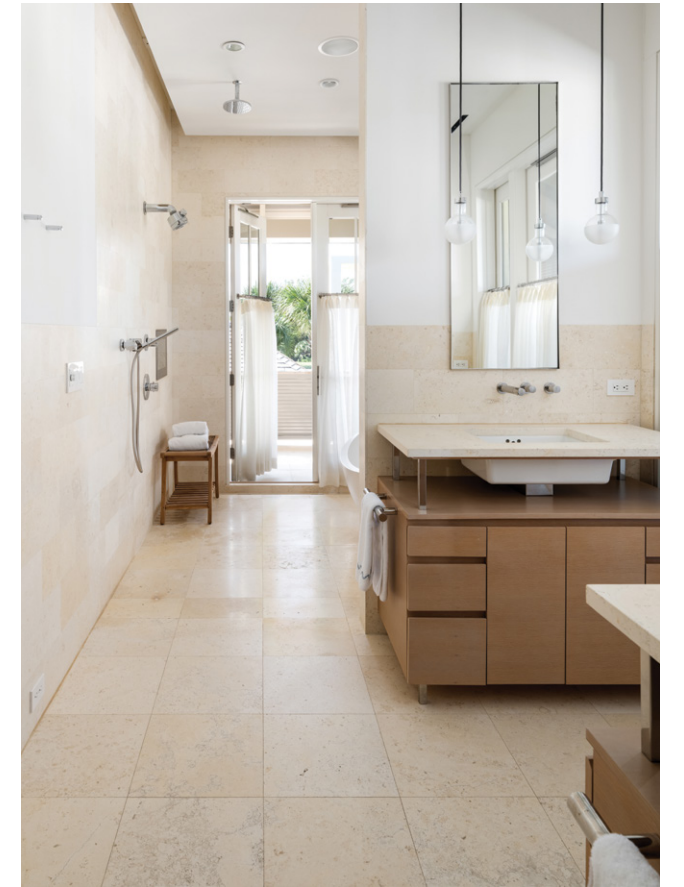
LIVING & ENTERTAINING

At the home's true center, the entry atrium and loggia lead to a series of outdoor living and dining spaces along the south-facing courtyard gallery. A salt water pool running parallel to the gallery integrates lap-swimming and wading areas and features a Bali-bed hovering just above the surface of the water. Inside, an open-plan family room has been designed with an entertaining kitchen and dining area. A second "chef's" kitchen is equipped with stainless steel cabinets and premium appliances.



PRIVATE SUITES

A contemporary oak and stainless steel staircase framing the entry atrium leads to the second floor, where an outdoor living porch with a fireplace located between the two bedroom wings overlooks the pool and courtyard. A deep covered porch wraps the home, giving access to all five en-suite bedrooms, each of which features vaulted or coffered ceilings. At the western end of the home, the primary bedroom suite enjoys panoramic lake and golf course views.





DESIGN DETAILS & FINISHES

PROPERTY & ARCHITECTURE

- Located in Windsor's South Village, which has a direct dedicated entrance from Highway A1A
- Landscaping features custom stainless steel lighting, queen and traveling palms, birds of paradise, creeping fig, black bamboo and bougainvillea

OUTDOOR LIVING

- Double-height open-air entry atrium
- Heated salt-water pool with integrated lap-swimming and wading areas
- Covered dining porch and living pavilion with a fireplace
- Second-story covered living porch with a fireplace and covered wraparound porch accessible from all bedroom suites

LIVING/DINING ROOM & ENTERTAINING KITCHEN

- 11-foot ceilings, shell cast stone floors and 10-foot high custom French doors
- Dining area overlooking the courtyard and pool
- Kitchen area features white oak cabinetry with travertine countertops and a prep-island / breakfast bar with travertine waterfall edge countertop and Gaggenau range
- All undercounter appliances, including a warming drawer, microwave, refrigerator drawers, and dishwashing drawers

CHEF'S KITCHEN

- Stainless steel cabinetry with travertine countertops and shell cast stone floors
- Franke sinks; range, ovens, and steam drawer by Viking; refrigerator and wine tower by Sub-Zero; Bosch dishwasher
- Access to laundry room

PRIMARY SUITE

- Vaulted ceilings and plane saw pickle-finish wood floors in the bedroom area
- Access to wraparound covered porch via French doors
- Features a custom walk-in closet / dressing room
- Primary bathroom with shell cast stone flooring, custom white oak and stainless steel vanities, a deep-soaking bathtub, separate shower and a water closet

HOME OFFICE

- Separate two-story structure with golf cart parking below and home office above featuring vaulted ceilings, custom cabinetry, and three walls of windows

CONSTRUCTION & TECHNOLOGY

- Lutron HomeWorks Automation system and lighting
- Bose sound system
- AquaLink automated pool system

A VILLAGE BY THE SEA

Located in Vero Beach along Florida's Treasure Coast, Windsor is a private residential community and sporting club with a uniquely enchanting lifestyle. Across 472 lush acres, nestled between the Atlantic Ocean and the Indian River, Members and guests enjoy a host of exclusive amenities, including beach and golf clubs, a links-style golf course, tennis and equestrian centers and fine and casual dining restaurants.



AMENITIES

1. VILLAGE CENTRE
2. FITNESS & WELLNESS CENTRE
3. TOWN HALL
4. EQUESTRIAN CENTRE
5. BEACH CLUB
6. POLO FIELD
7. CROQUET GREENSWARD
8. TENNIS CENTRE
9. CLUBHOUSE
10. THE GALLERY
11. FUTURE FITNESS & WELLNESS CENTRE



10680 BELVEDERE SQUARE VERO BEACH FLORIDA 32963
TEL 772 388 8400 WINDSORFLORIDA.COM